



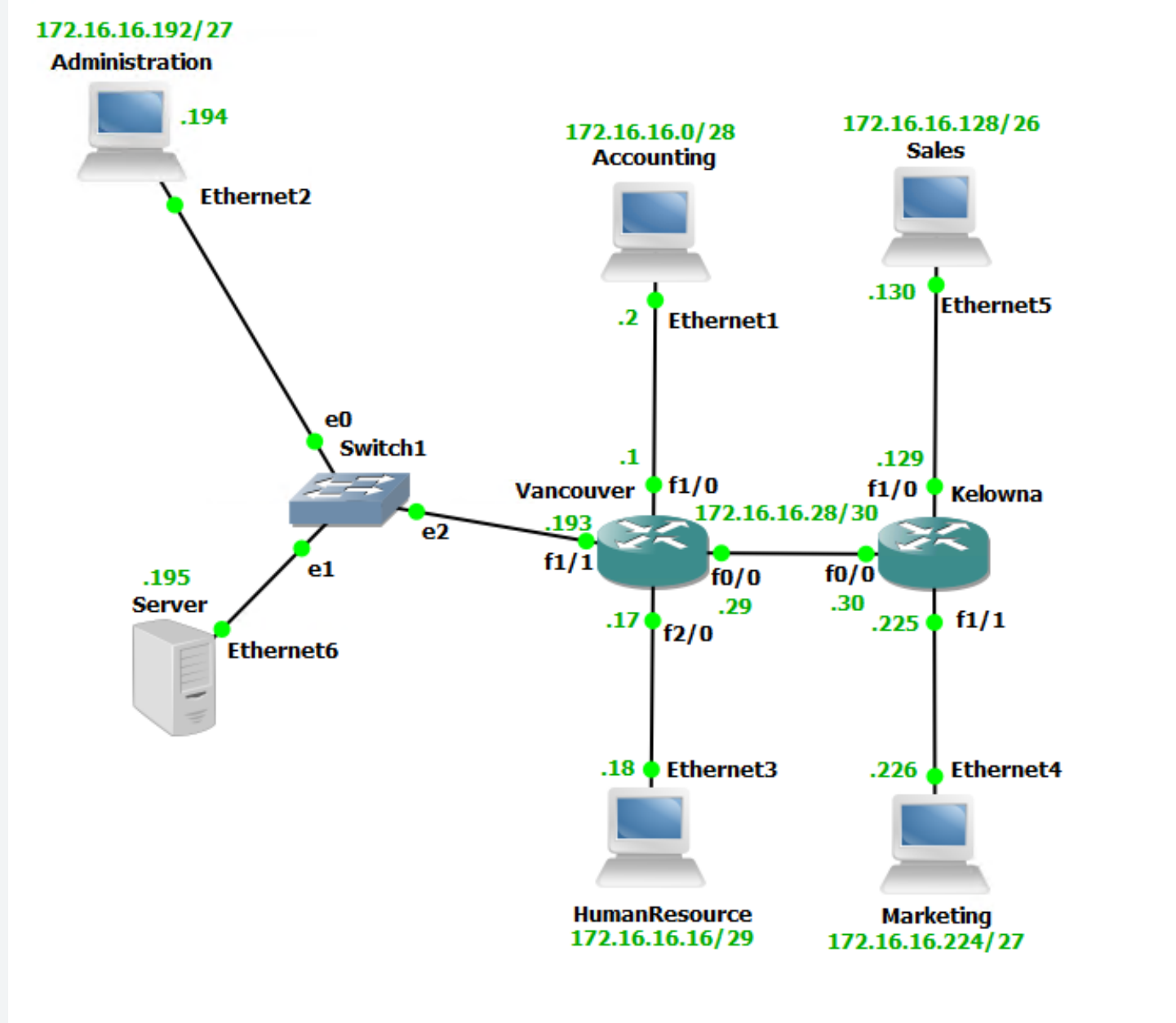
**NCT CHARTER
PROJECT**



CONTENT

- 
- 01** TITLE PAGE
 - 02** TABLE OF CONTENTS
 - 03** NETWORK DESIGN
 - 04** VANCOUVER SITE
 - 05** VANCOUVER ROUTER CONFIG
 - 06** KELOWNA SITE
 - 07** KELOWNA ROUTER CONFIG
 - 08** ACCESS LISTS

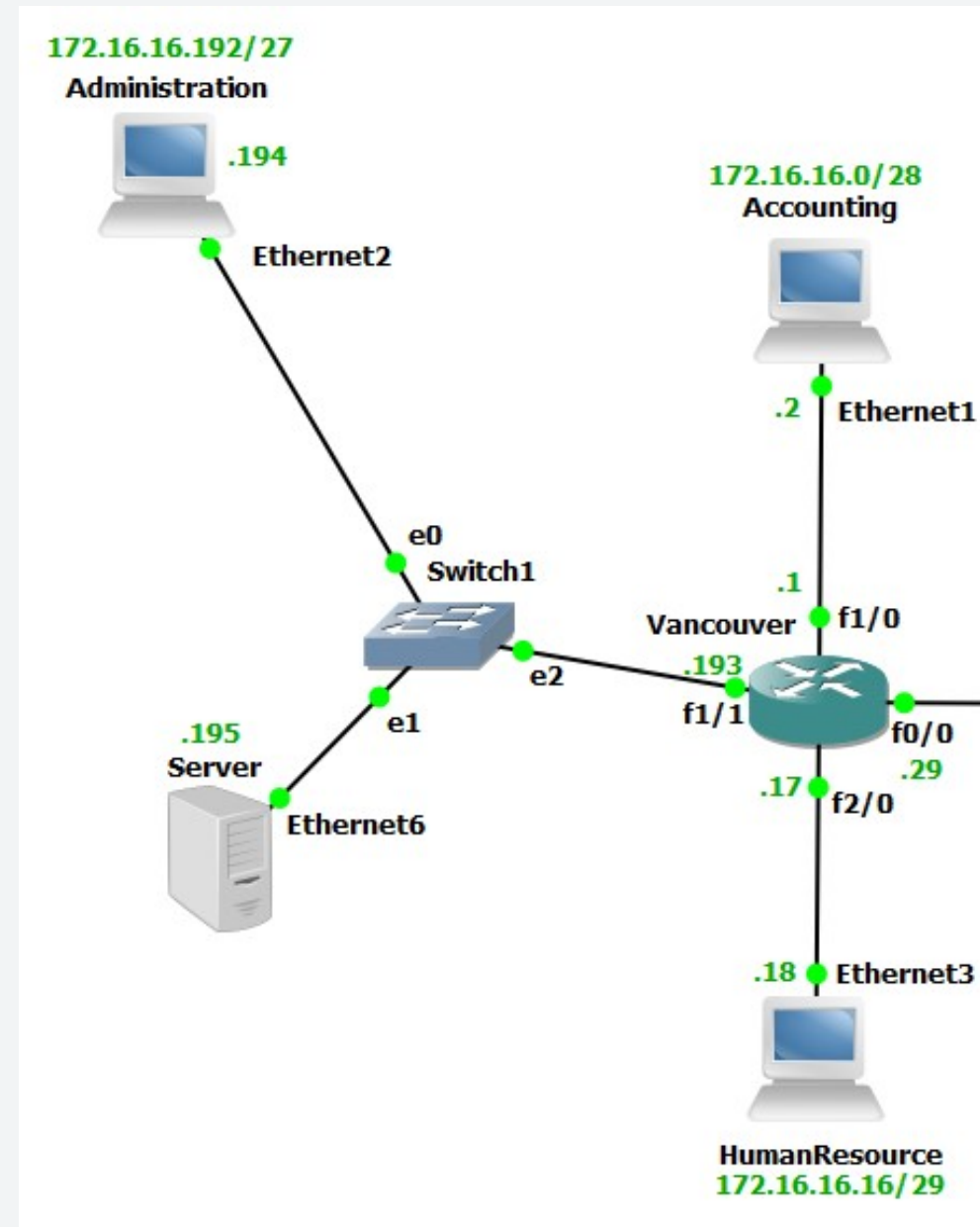
IP BLOCK = 172.16.16.0/20
2 NETWORKS, 2 LOCATIONS,
NETWORK CONNECTOR/TUNNEL =
172.16.16.28/30



VANCOUVER SITE

BUILD A VIRTUAL NETWORK AS FOLLOWS:

- ACCOUNTING (10 NODES)**
- ADMINISTRATION (19 NODES)**
- HUMAN RESOURCE (3 NODES)**

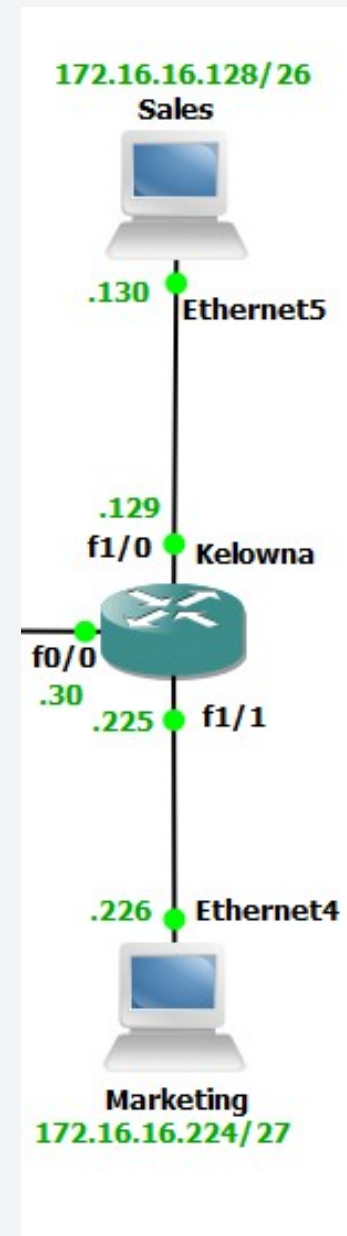


KELOWNA SITE

BUILD A VIRTUAL NETWORK AS FOLLOWS:

MARKETING (16 NODES)

SALES (45 NODES)



Access Lists

ACCESS-LIST 10 DENY 172.16.16.0 0.0.0.15
ACCESS-LIST 10 DENY 172.16.16.224 0.0.0.31
ACCESS-LIST 10 PERMIT ANY

ACCESS-LIST 20 DENY 172.16.16.224 0.0.0.31
ACCESS-LIST 20 DENY 172.16.16.128 0.0.0.63
ACCESS-LIST 20 PERMIT ANY

ACCESS-LIST 30 DENY 172.16.16.128 0.0.0.63
ACCESS-LIST 30 PERMIT ANY

ACCESS-LIST 40 DENY 172.16.16.128 0.0.0.63
ACCESS-LIST 40 PERMIT ANY

ACCESS-LIST 100 DENY TCP 172.16.16.0 0.0.0.15 HOST 172.16.16.195 EQ WWW
ACCESS-LIST 100 DENY TCP 172.16.16.16 0.0.0.7 HOST 172.16.16.195 EQ WWW
ACCESS-LIST 100 DENY TCP 172.16.16.128 0.0.0.63 HOST 172.16.16.195 EQ 25
ACCESS-LIST 100 DENY TCP 172.16.16.224 0.0.0.31 HOST 172.16.16.195 EQ 25
ACCESS-LIST 100 PERMIT IP ANY ANY